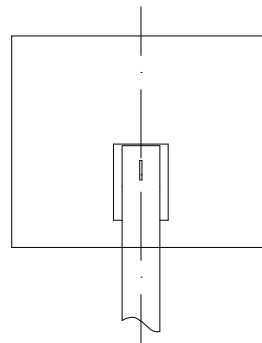
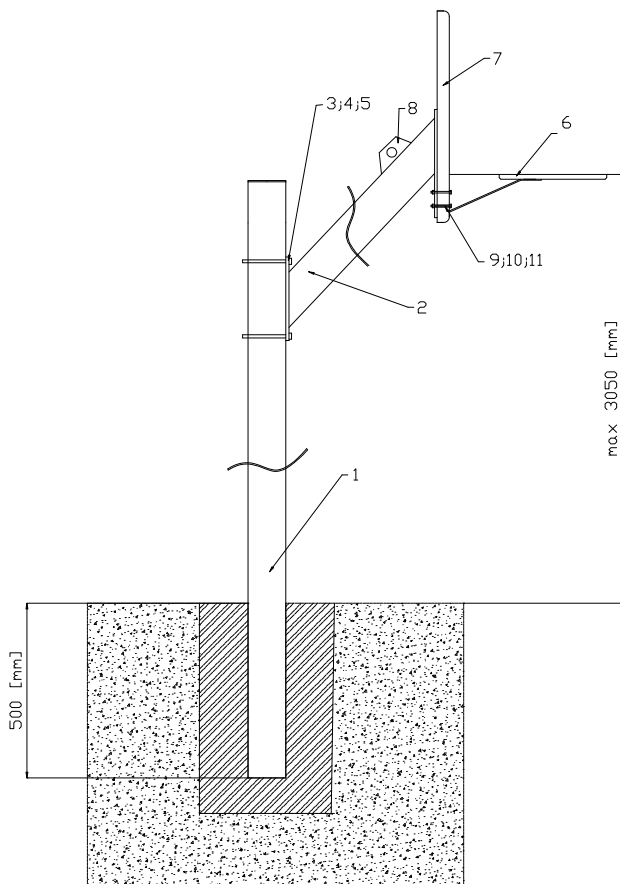


# **SISTEM BASCHET COD 105**

## ***Instructiuni montaj***

### **Parti componente**

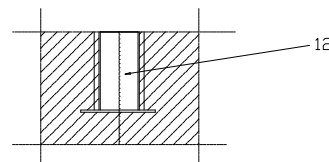
1. Stalp sustinere panou – 1 buc	7. Panou baschet – 1 buc
2. Prelungire brat – 1 buc	8. Placa sustinere – 1 buc
3. Brida fixare – 2 buc	9. Surub M10x50 – 4 buc
4. Piulita cu autoblocare M12 – 4 buc	10. Saiba A13 – 4 buc
5. Saiba A 12 – 4 buc	11. Piulita M10 – 4 buc
6. Inel baschet – 1 buc	12. Cupa fixare – 1 buc



Vedere spate sistem baschet cod 105.



Brida fixare prelungire brat (poz. 3).



Vedere laterala sistem baschet cod 105.

Fixare cupa (poz 12) in beton.

- I. Fixati cupa (poz. 12) in beton B25, adancime 800x800 mm
- II. Montati la stalp (poz 1) prelungirea bratului (poz 2) cu ajutorul bridelor (poz 3)
- III. Fixati cu suruburi (poz 9; 10; 11) panoul de baschet de prelungirea bratului
- IV. Dupa 24 h de la fixarea cupei in beton, montati sistemul in cupa
- V. Fixati sistemul de baschet la inaltimea dorita.